

AXIONLIFT TCO60+10E / FORD F750 / 212" WB

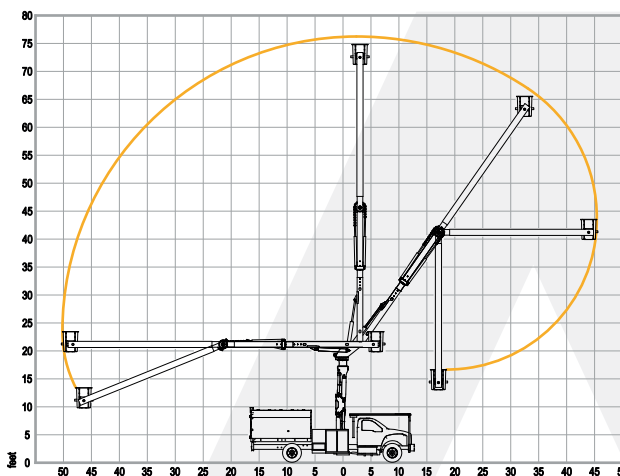
WORKING HEIGHT	TYPE	MODEL	TRUCK
75 ft	Articulating Overcenter	TCO60+10E	FORD F750

Working height	75.1 ft
Ground to bottom of the platform	70.2 ft
Maximum reach from centerline of rotation	47.0 ft
Maximum reach upper boom non overcenter	45.0 ft
Stowed travel height	12.5 ft
Platform capacity	400 lb
Platform dimensions	24 x 24 x 42 in
Lower boom articulation	0° to 125°
Upper boom articulation	0° to 270°
Rotation	360° Continuous Infinite

STANDARD FEATURES

- Emergency stop valves at the upper and lower control stations.
- Lower controls with override to the platform.
- 4 function single hand control (Joystick).
- Automatic Platform Leveling System.
- Hydraulic oil level and thermometer.
- Articulating pins with self-lubricating bushing.
- "A" frame outriggers.
- Interlock System for Booms & Outriggers.
- Outrigger motion alarm.
- Hoses fully embedded inside booms.
- Holding valves integrated in hydraulic cylinders.
- Insulated 46 kV Category C.
- Chassis Insulating System (Lower Boom).
- Liner.
- Hydraulic tool circuit at platform.
- Engine Start/Stop at platform.
- Auxiliary emergency pump.
- Manual platform tilt.
- Full size chip box provides excellent payload capacity.
- Maintenance free elbow.
- Vynil platform.
- Back up alarm.
- No required major scheduled maintenance.
- AXIONLIFT meets or exceeds ANSI A92.2 standards.

REACH DIAGRAM TCO60+10E



SERVICE AND PARTS SUPPORT



833-34-FLY-AX (35929) | support@axionlift.com

Manned by expert in-house & mobile technicians, specializing in inspections, repairs & preventative maintenance.